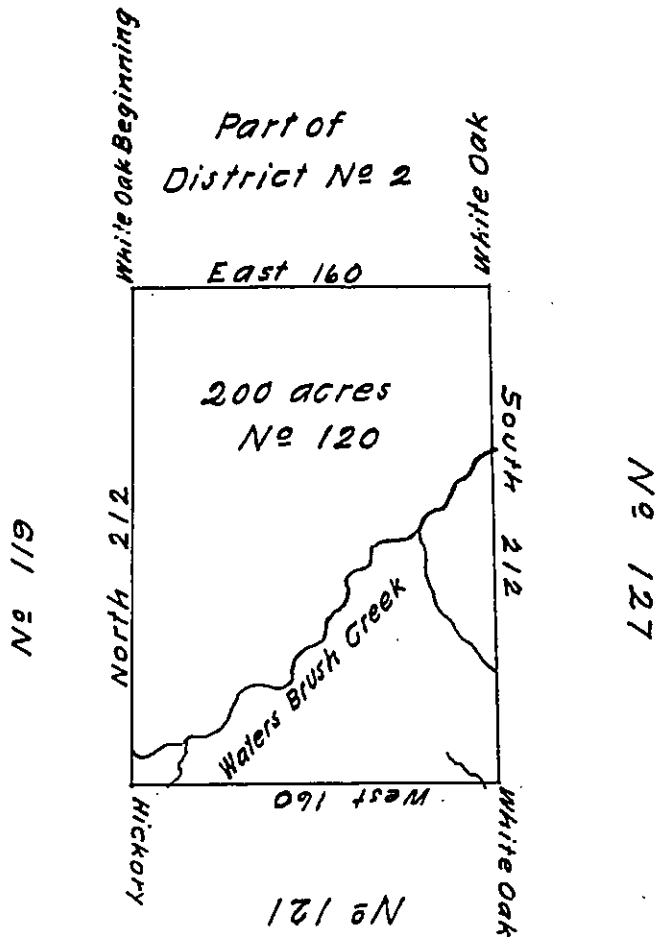


✓



The above is a draught of survey made in the month of July 1785 in pursuance of instructions from the Surveyor General dated the 22<sup>d</sup> day of Jan<sup>y</sup> 1785 situate on the North side of the Ohio River on the waters of Brush Creek in District No 2 Containing two hundred acres with allowance of 6 <sup>7</sup>/<sub>8</sub> cent.

Dan<sup>l</sup> Leet D.S.

John Lukens Esq<sup>r</sup> Surv<sup>r</sup> Gen<sup>l</sup>

IN TESTIMONY that the above is a copy of the original remaining on file in the Department of Internal Affairs of Pennsylvania, made conformably to an Act of Assembly approved the 16th day of February, 1833, I have hereunto set my Hand and caused the Seal of said Department to be affixed at Harrisburg, this Ninth day of July 1912

*Henry Howell*  
Secretary of Internal Affairs.